

Evolution of AI Agent Registry Solutions: Centralized, Enterprise, and Distributed Approaches

Aditi Singh
Cleveland State University
a.singh22@csuohio.edu

Abul Ehtesham
Kent State University
aehtesha@kent.edu

Mahesh Lambe
Independent Researcher
maheshlambe@gmail.com

Jared Grogan
Independent Researcher
grogan.jared@gmail.com

Abhishek Singh
Massachusetts Institute of Technology
abhi24@media.mit.edu

Saket Kumar
Northeastern University
kumar.sak@northeastern.edu

Luca Muscariello
CISCO
lumuscar@cisco.com

Vijoy Pandey
CISCO
vijoy@cisco.com

Guillaume Sauvage De Saint Marc
CISCO
g2stmarc@cisco.com

Pradyumna Chari
Massachusetts Institute of Technology
pchari@mit.edu

Ramesh Raskar
Massachusetts Institute of Technology
raskar@mit.edu

Abstract—Autonomous AI agents now operate across cloud, enterprise, and decentralized domains, creating demand for registry infrastructures that enable trustworthy discovery, capability negotiation, and identity assurance. We analyze five prominent approaches: (1) MCP Registry (centralized publication of `mcp.json` descriptors), (2) A2A Agent Cards (decentralized self-describing JSON capability manifests), (3) AGNTCY Agent Directory Service (IPFS Kademlia DHT content routing extended for semantic taxonomy-based content discovery, OCI artifact storage, and Sigstore-backed integrity), (4) Microsoft Entra Agent ID (enterprise SaaS directory with policy and zero-trust integration), and (5) NANDA Index AgentFacts (cryptographically verifiable, privacy-preserving fact model with credentialed assertions). Using four evaluation dimensions—security, authentication, scalability, and maintainability—we surface architectural trade-offs between centralized control, enterprise governance, and distributed resilience. We conclude with design recommendations for an emerging Internet of AI Agents requiring verifiable identity, adaptive discovery flows, and interoperable capability semantics.

Index Terms—Agentic web, registry, trust, verifiable credentials, healthcare AI, decentralized identity

I. INTRODUCTION

Autonomous AI agents are rapidly becoming foundational across domains from cloud-native assistants and robotics to decentralized systems and edge-based IoT controllers. These agents act independently, make decisions, and collaborate at scale. As agent populations grow into the billions across heterogeneous platforms and administrative boundaries, the ability to *identify, discover, and trust agents in real time* has emerged as a critical infrastructure challenge.

Traditional mechanisms like DNS and static service catalogs are poorly suited to agent ecosystems, which demand *dynamic discovery, verifiable metadata, and privacy-preserving interactions* [1]. Legacy systems assume fixed endpoints and ownership-based trust models, lacking the flexibility and cryptographic assurances needed for agents that rotate capabilities, change locations, and form ephemeral collaborations.

To address these limitations, several agent frameworks have introduced discovery metadata models. This paper focuses on three emerging approaches:

This paper presents a comparative analysis of five registry architectures:

- **MCP Registry** [2]: centralized metadata publication for MCP servers via versioned `mcp.json`.
- **A2A Agent Cards** [3]: decentralized JSON capability and endpoint description resolved at `/.well-known/agent.json`.
- **AGNTCY Agent Directory Service (ADS)**: IPFS Kademlia DHT content routing (extended for semantic taxonomy discovery), OCI artifact storage, Sigstore integrity proofs, and enterprise federation hooks.
- **Microsoft Entra Agent ID** [4]: managed enterprise directory integrating lifecycle, governance, conditional access, and policy enforcement.
- **NANDA Index: AgentFacts** [5]: decentralized verifiable credential (VC)-backed fact model supporting privacy-preserving dual-path discovery.

Rather than surveying general agent communication protocols [6], this work is a focused comparison of these *AI registry solutions*. It explores how each approach supports real-time discovery, identity validation, and cross-domain interoperability.

The paper is organized as follows: Section II outlines background and motivation for agent registries. Section III introduces the evaluation framework and functional criteria. Sections IV–VI examine MCP, A2A, Microsoft Entra Agent ID and NANDA in depth. Section VII provides a comparative analysis across security, scalability, authentication, and maintainability. Section VIII concludes with design suggestions and practical recommendations for registry adoption in multi-agent systems.

By comparing these registries in the context of emerging agent infrastructure needs, this survey highlights the current

gaps and emerging solutions driving the future of the Internet of AI Agents.

In trust-critical domains such as healthcare, finance, and critical infrastructure, agent registries must answer: *How do we verify an agent is who it claims to be? How do we ensure its advertised capabilities haven't been tampered with? How do we revoke access when trust is violated?* This paper evaluates how five registry approaches address these trust primitives.

II. BACKGROUND

The modern web operates on a reactive, client-driven model in which services wait for external requests before responding. Despite significant advances in cloud automation and event-driven design, this architecture remains largely inadequate for the emerging Internet of AI Agents, paradigm shift where autonomous, goal-directed software agents negotiate, coordinate, and act proactively on behalf of users. Unlike traditional web resources, which are typically stateless and short-lived, autonomous AI agents are persistent computational entities capable of initiating control flow, retaining long-term memory, dynamically adapting to context, and spawning subordinate agents. These agents require infrastructure that supports high-frequency updates, real-time identity resolution, and trustable metadata exchange across heterogeneous systems and organizational boundaries.

This shift introduces significant challenges for discovery and coordination. The current Internet stack built on DNS, IP addressing, and certificate authorities was not designed to handle trillions of fast-moving, self-directed agents. Limitations in revocation latency, state propagation, identity verification, and routing scale all become critical bottlenecks, particularly in trust-sensitive domains requiring zero-trust architectures and continuous verification [7], [8]. The fundamental question of whether to upgrade existing infrastructure or implement purpose-built agent registries represents a qualitative, not incremental, architectural transition [5].

To address these gaps, new registry models are emerging that shift away from static name-resolution systems to dynamic, metadata-rich discovery layers tailored to autonomous agents. This paper focuses on three such models, each coupled with a distinct metadata schema:

- **MCP Registry:** A centralized metaregistry that enables structured agent metadata publishing via `mcp.json`, supporting installability and versioning for MCP-compatible agents.
- **A2A Agent Cards:** A flexible, decentralized format for agent self-description, enabling discovery via well-known URLs, curated registries, or configuration files.
- **AGNTCY Agent Directory Service (ADS):** A content-addressed, OCI-aligned directory that resolves semantic capabilities to immutable digests and uses decentralized rendezvous (DHT) for provider discovery [9].
- **NANDA AgentFacts:** A cryptographically verifiable, privacy-preserving metadata schema designed for dynamic resolution, credentialed capability assertions, and federated environments.

These registry systems are positioned to address the foundational needs of the Internet of AI Agents: sub-second identity resolution, schema-validated capability representation, verifiable trust models, and privacy-aware discovery. Each model offers a different architectural stance, centralized, federated, or decentralized, on how to meet these requirements. This survey situates these three approaches within the broader transformation of web infrastructure, drawing historical parallels to transitions such as dial-up to broadband and IPv4 to IPv6. By understanding the limitations of existing systems and the unique demands of AI agents, we highlight why purpose-built registries are essential for scalable, secure, and interoperable agent ecosystems.

A. Trust Requirements in Agent Registries

Agent registries must provide three pillars of trust:

- **Identity Assurance:** Cryptographic binding between agent identifiers and their metadata, preventing impersonation and capability spoofing. Critical for healthcare agents handling protected health information (PHI).
- **Integrity Verification:** Tamper-evident metadata and audit trails that detect unauthorized modifications [10]. Essential for regulatory compliance (HIPAA, FDA, GDPR).
- **Privacy Preservation:** Discovery mechanisms that don't leak sensitive information about capabilities, access patterns, or organizational relationships—particularly important in clinical research and cross-institutional collaborations.

These informed our evaluation framework in Section VIII.

B. Design Evaluation Dimensions

To compare candidate registry architectures against the above requirements, we evaluate along four core dimensions.

- **Security:** Integrity of registry records and metadata via cryptographic signing. Resistance to spoofing, registry poisoning, and man-in-the-middle attacks.
- **Authentication:** Mechanisms for publisher identity verification (e.g., GitHub OAuth + DNS-TXT, DID-VC issuance, X.509 PKI). How registry updates are gated and how namespace ownership is enforced.
- **Scalability:** Ability to handle high lookup volumes and large agent populations via TTL-based caching, federated deployments, or CDN offload. Support for low-latency, geo-distributed resolution.
- **Maintenance:** Operational simplicity: schema-first designs, minimal core code, decoupled metadata hosting. Ease of upgrades, migration paths, and reduced patch surface by avoiding executable code hosting.

These dimensions provide a structured, source-grounded rubric for the comparative analysis in Sections 4–9.

III. MCP REGISTRY

The MCP registry is a centralized “metaregistry” for discovering and installing MCP servers. Publishers push a versioned `mcp.json` via a CLI tool that performs a GitHub OAuth flow and, for reverse-DNS namespaces, a DNS TXT challenge. The Go-based REST API exposes read endpoints

(no authentication) and write endpoints (GitHub OAuth + DNS verification), stores raw JSON in object storage, indexes metadata in MongoDB (with an in-memory fallback), and generates asynchronous jobs or webhooks. Downstream MCP client apps poll the registry (or private mirrors), cache the data locally, and serve end-users without direct live calls to the central service.

A. Security

The registry only accepts metadata from authenticated GitHub identities and, for domain-scoped namespaces, from DNS-verified domains. It does not host executable code; instead it holds metadata only, inheriting code-level security from established registries (npm, PyPI, DockerHub). This minimizes the attack surface and delegates authentication and domain control to proven systems.

B. Authentication

All publish requests require a GitHub OAuth bearer token tied to the submitting user or organization. For reverse-DNS namespaces (e.g. `com.microsoft`), a DNS TXT record proof is required and linked to that GitHub identity. Read operations are openly accessible.

C. Scalability

Only a small number of MCP client applications query the central registry; they cache and serve data to millions of end-users. The API supports asynchronous processing and webhooks. Metadata is stored in MongoDB suited to flexible, document-style records and served via CDN-cacheable HTTP endpoints; optional middle-layers (private mirrors, curated feeds) can shard load.

D. Maintenance

The registry's core service is schema-driven by `mcp.json` (OpenAPI/JSON Schema), with no package hosting or scanning to maintain. A CLI tool automates publication and verification flows. Schema updates proceed independently of the service code, and validation logic resides with the publisher.

IV. AGENT2AGENT (A2A) PROTOCOL

The Agent2Agent (A2A) protocol is a transport-agnostic, enterprise-ready standard for inter-agent communication across heterogeneous systems. A2A enables autonomous agents potentially opaque, vendor-specific, or closed-source to discover, negotiate, and collaborate using a shared JSON-RPC interface over secure HTTP transport.

A2A is optimized for asynchronous, long-running, multi-modal, and streaming interactions, supporting flexible task handoff between agents without requiring visibility into internal execution models. Through its declarative AgentCard, it enables dynamic discovery of skills, capabilities, and authentication requirements, establishing a standardized model for agent-to-agent collaboration.

A. Security

A2A relies on transport-layer security (TLS) and established web security best practices. Identity and authentication are handled outside of the A2A JSON-RPC payload via standard HTTP headers, allowing compatibility with OAuth2, API keys, and mTLS. Server identity is verified via TLS certificates, while clients authenticate based on security schemes advertised in the AgentCard. Push notifications (webhooks) are authenticated using per-client credentials, tokens, or schemes negotiated during setup. Agents do not share internal states; interactions are scoped to declared capabilities and managed through tasks and artifacts, reducing attack surfaces and limiting data exposure.

B. Authentication

AgentCards explicitly declare supported authentication mechanisms using OpenAPI-style security schemes (e.g., Bearer tokens, OpenID Connect, API keys). Clients must obtain credentials out-of-band and include them in request headers. Each RPC call is authenticated individually, and servers return HTTP 401/403 responses with guidance when credentials are missing or invalid. During execution, if secondary credentials are needed (e.g., to proxy tool access), tasks transition to auth-required, and clients supply the required credentials in subsequent messages.

C. Scalability

A2A's task-based, stateless transport over HTTP and SSE enables horizontal scalability across distributed agent systems. Agents define capabilities declaratively in AgentCards, allowing registries and discovery services to dynamically catalog available services. Tasks are long-lived objects with unique IDs, status updates, and artifact streams. Streaming (via SSE) and push notifications reduce polling overhead. Task lifecycles support fine-grained eventing (submitted, working, input-required, etc.), enabling responsive and resilient orchestration even in failure-prone environments.

D. Maintainability

A2A is intentionally simple and extensible, built atop HTTP and JSON-RPC 2.0. It minimizes custom logic and avoids bespoke protocols. Features like AgentCard and structured data formats (e.g., TextPart, DataPart, FilePart) ensure consistent interpretation of messages while allowing modality diversity. Schema evolution is flexible: agents can define capabilities per skill, override input/output MIME types, and extend their AgentCard dynamically. Task handling and message structure follow consistent, extensible conventions.

V. AGNTCY AGENT DIRECTORY SERVICE

The AGNTCY Agent Directory Service (ADS) is organized around four composable layers that separate data modeling, storage, distribution, and content selection so the system can scale and evolve independently at each concern:

- 1) **Agent AI metadata modeling (Open Agent Schema Framework, OASF).** Open Agent Schema Framework

(OASF) cleanly separates what an agent can do from the conditions under which it may do it. *Semantic attributes* describe the capability surface—skills and operational domains. *Constraint descriptors* capture required dependencies (models, tools, data sources), resource and latency cost profiles, token budgets, and any compliance gates. This separation lets a resolver align intent with capability while enforcing execution bounds.

- 2) **Immutable object storage (OCI).** Directory records are packaged as OCI-compliant artifacts and pushed to registries; each artifact is addressed by a cryptographic digest that enforces immutability and enables de-duplication. The OCI naming model yields globally unique references and efficient layer reuse for transport and caching. Human-readable aliases (tags or descriptive name attributes) can be attached without weakening the canonical digest binding.
- 3) **Content distribution (OCI Distribution Spec).** Global replication, caching, and mirroring leverage the standard OCI Distribution Specification [11], allowing any compliant registry to host identical artifacts (same digest) without coordination—enabling multi-source failover and locality-aware retrieval.
- 4) **Content and registry selection (IPFS Kademlia DHT).** Selection reconciles heterogeneous registries via a two-step mapping: (1) semantic taxonomies (skills, domains) resolve to canonical OCI content identifiers (digests) through capability→digest indices; (2) each digest is mapped to one or more registry identifiers and locators (endpoints, tags, replica metadata). The extended Kademlia DHT [12] stores and routes both mapping layers, letting the content scheduler first derive the immutable content address, then choose optimal registries/replicas using locality and freshness cues. Once a digest is resolved and its minimal record (plus referenced artifact metadata) retrieved, rich filtering across the full OASF attribute set occurs locally; the DHT acts only as a rendezvous layer optimized for sparse semantic capability mappings rather than exhaustive attribute indexing.

a) *On Naming and Zooko’s Triangle.*: By anchoring human-readable attributes to cryptographic OCI digests (via signed OASF records) and resolving them through a decentralized DHT, ADS satisfies the three traditionally conflicting properties of Zooko’s triangle: (1) decentralized naming, (2) secure naming (Sigstore provenance plus signed attestations [13]), and (3) human-readable naming (scoped semantic attributes and constraints). A common criticism is that the “secure” leg, when implemented solely with Sigstore, still relies on a partially centralized trust root. To mitigate this, ADS can augment Sigstore with a trustless, smart-contract-anchored attestation path (e.g., ERC-8004 [14]) that commits record signature digests on-chain.

Architecture

Building on the four layers above, ADS introduces a semantic enrichment path. Hierarchical skill taxonomies ac-

celerate capability-scoped queries before DHT resolution. Replica metadata (latency, region, freshness) feeds a composite scoring function that produces deterministic, low-cost selection decisions. Location-independent OCI digests (`sha256:<digest>`) enable transparent multi-registry reconciliation: any registry serving the same digest becomes an interchangeable source. Digest equality, reinforced by Sigstore provenance attestations, enforces immutability and prevents substitution. Dynamic selection avoids centralized choke points by coupling semantic relevance with Kademlia routing proximity.

A. Security

ADS security separates (1) *content / artifact security* from (2) *server / runtime security*, allowing strong integrity and provenance guarantees even in minimally trusted network environments.

B. Authentication

Authentication in AGNTCY ADS is implemented in two distinct parts: data authenticity and server authentication.

Data Authenticity. This ensures that the data producer is authenticated and the integrity of the data is verifiable. All directory records are packaged as OCI records whose cryptographic digests are self-authenticating: the name (`sha256:<digest>`) is a direct function of the bytes, giving immutable, collision-resistant identifiers and secure naming by construction. Each published digest is accompanied by Sigstore provenance and signature materials (provenance attestation, record, producer identity, source revision), enabling pre-execution policy such as “only activate if provenance + record verified” without trusting a central admission service. Capability and constraint descriptors in the minimal OASF record are signed and bound (via the referenced digest) to the record they describe, preventing capability re-binding or privilege escalation through manifest substitution.

Server Authentication. This ensures trust among server peers and restricts unauthorized access. Core discovery can be left open (content trust is intrinsic), but operators often restrict which peers a directory node will accept or exchange routing/index data with. “Secure mode” introduces: (1) authenticated peer admission (static allowlist or dynamic attestation) before Kademlia session establishment; (2) mutual TLS with short-lived SPIFFE/SPIRE SVIDs or equivalent rotating credentials. These measures shrink the unsolicited attack surface (e.g., DDoS amplification/state exhaustion) and satisfy enterprise policies that forbid arbitrary federation. Such zero-trust peer authentication patterns are increasingly required in regulated environments [8].

C. Scalability

Every directory node contributes routing, semantic index shards, and OCI artifact cache capacity. Adaptive replication promotes hot capability shards and frequently requested artifact digests near demand clusters. IPFS Kademlia iterative lookups (extended with locality + semantic relevance scoring)

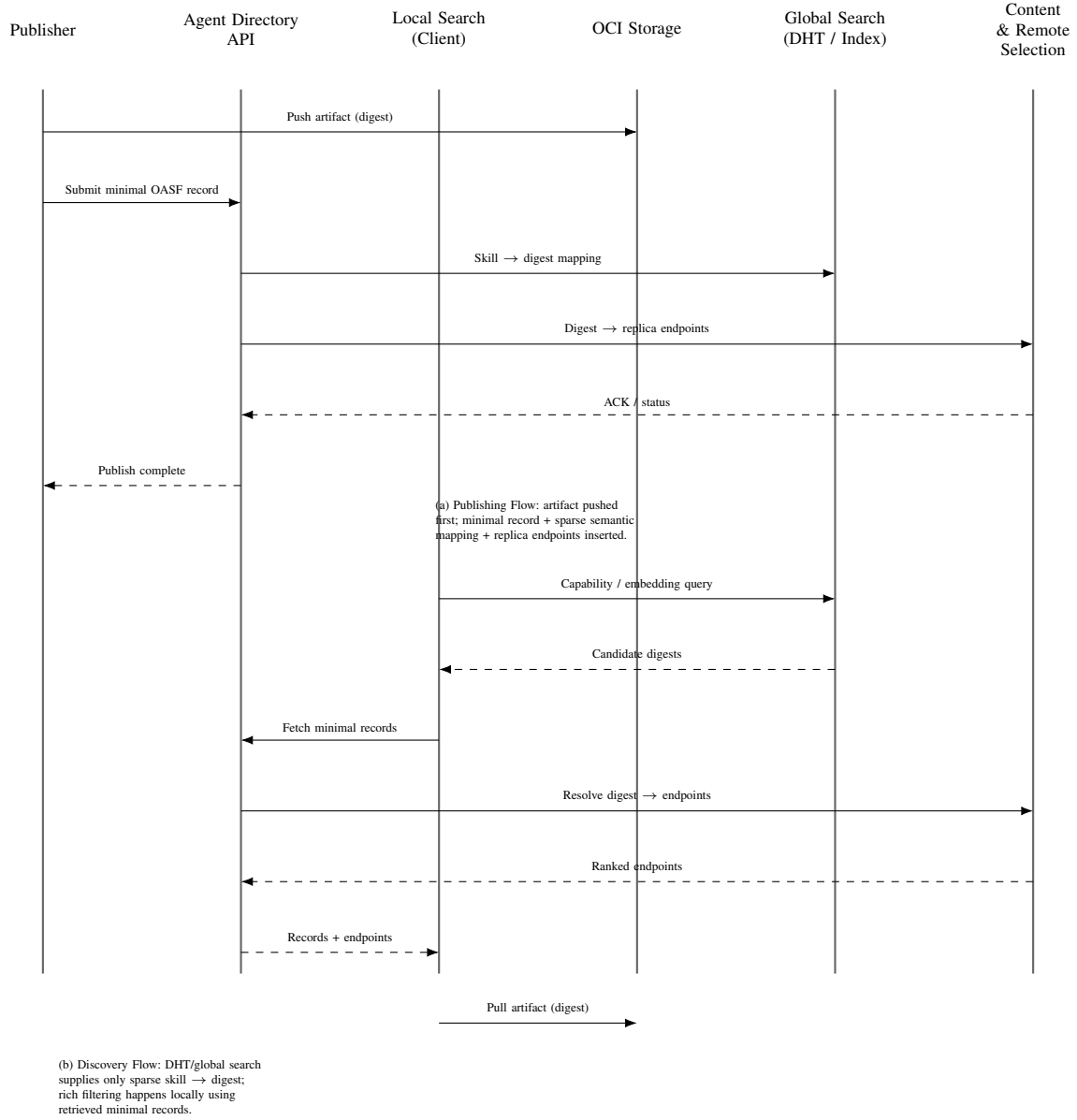


Fig. 1. Time-flow (sequence) diagrams for AGNTCY Agent Directory. Vertical lifelines represent: Publisher, Agent Directory API, Local Search, OCI Storage, Global Search (semantic DHT / embedding index), and Content & Remote Server Selection. (a) Publishing: artifact push precedes minimal record publication; sparse semantic (skill → digest) plus digest → endpoint mappings are inserted. (b) Discovery: local capability intent resolves via global search to digests, minimal records are fetched, local filtering/ranking occurs, endpoints resolved, and the selected artifact is pulled.

are augmented by locality-aware peer selection (latency + load) while opportunistic caching shortens future paths. Joint optimization of OCI naming and distribution means that the same digest can be resolved to the lowest-latency verified replica; if replicas diverge the digest changes, forcing explicit revalidation. Content prefetch and layer deduplication (OCI) reduces bandwidth while preserving deterministic digest integrity.

D. Maintainability

Declarative deployment (Kubernetes with Helm) together with GitOps workflows minimizes control-plane drift. Cross-

registry reconciliation through digest equality lets autonomous registries evolve naming and tagging conventions independently while remaining interoperable at the content-address level. Interoperability with external registries is a distinctive feature: data from sources such as MCP or A2A can be reconciled provided it is modeled into OASF via the corresponding module. Modules for MCP and A2A are currently available.

E. Enterprise Deployment Considerations

The NANDA architecture has been explored in enterprise environments [15], demonstrating cross-protocol interoperability with MCP, A2A, and standard HTTPS communications.

The framework proposes Zero Trust Agentic Access (ZTAA) principles, extending traditional Zero Trust Network Access to address autonomous agent security challenges across heterogeneous protocol environments. This deployment experience informs the design choices outlined above, particularly regarding federation, policy enforcement, and credential management at scale.

VI. MICROSOFT ENTRA AGENT ID

Microsoft Entra Agent ID provides a managed, enterprise-grade directory for AI agent identities. Agents created in Copilot Studio or Azure AI Foundry automatically appear as “Agent ID” applications in the Entra admin center. Identity practitioners gain visibility, lifecycle management, and access governance for these non-human identities using the same tools and policies as for user or service identities. Upcoming features include least-privilege token issuance, expanded Conditional Access, and cross-tenant identity federation. Further analysis of Microsoft Entra Agent ID’s security, authentication, scalability, and maintainability will be possible once technical documentation and operational data are available.

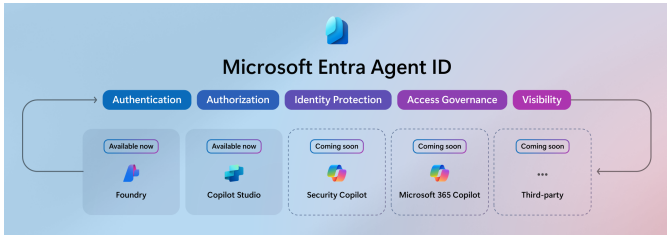


Fig. 2. Microsoft Entra Agent ID Overview [4]

VII. NANDA INDEX

The Networked Agents and Decentralized AI (NANDA) Index, envisioned as a quilt of agents, resources, and tools registries spanning platforms, organizations, and protocols, presents a lean, modular architecture for agent discovery in decentralized environments. This quilt-like index supports the inclusion of both NANDA-native agents and third-party agents, enabling broad discoverability via a unified framework. Designed for scale, privacy, and interoperability, NANDA separates static identifier resolution from dynamic agent metadata to support rapid discovery, credentialed verification, and flexible routing across federated agent ecosystems.

Through this approach, NANDA index enables global interoperability, discoverability, and adaptable governance of agents without enforcing centralized control. Rather than acting as a universal authority, NANDA index allows commercial, governmental, and individual stakeholders to choose how their agents interact with the index. Agents can be listed directly within NANDA index or simply referenced via redirects to external platforms. This ensures that entities retain full control over access policies, trust management, and certification processes within their own domains, while still participating in a globally connected AI ecosystem.

At the core of the design is the concept of a minimal AgentAddr record an *Ed25519* signed object that maps agent identifiers to one or more verifiable metadata locations: a public FactsURL, an optional privacy-preserving PrivateFactsURL, and an AdaptiveRouterURL for real-time routing. These records are lightweight (≤ 120 bytes), cacheable, and stable, minimizing registry writes even in high-churn environments.

The full discovery flow is structured across three modular layers, each optimized for a specific role in scalable, decentralized agent ecosystems:

- 1) **Lean Index Layer:** Provides a decentralized, cacheable mapping from agent identifiers to signed AgentAddr records (≤ 120 bytes), which include metadata URLs, cryptographic signatures, and TTLs. These lightweight, tamper-resistant records serve as the immutable anchor for discovery and routing without requiring frequent writes to the index.
- 2) **AgentFacts Layer:** Distributes rich, schema-validated metadata using self-describing JSON-LD documents signed as W3C Verifiable Credentials. These documents describe capabilities, endpoints, and authentication logic, and can be hosted at agent-controlled domains or decentralized storage (e.g., IPFS), allowing privacy-preserving updates independent of the index.
- 3) **Dynamic Resolution Layer:** Interprets metadata to route queries through static, rotating, or adaptive endpoints [16]. This layer supports context-aware, real-time endpoint selection based on geographic location, system load, agent capabilities, and security threats. The AdaptiveResolver architecture enables short-lived endpoint rotation and negotiation of trust, quality of service, and resource constraints to meet performance, privacy, and resiliency requirements at scale.

A. Security

NANDA ensures security through end-to-end cryptographic guarantees. Each AgentAddr is signed using *Ed25519* by the originating registry, ensuring authenticity, integrity, and immutability. AgentFacts documents are signed as W3C Verifiable Credentials (VCs v2), supporting short-lived credentials (often < 5 minutes) and real-time revocation via VC-Status Lists. This cryptographic framework prevents identity spoofing, capability forgery, or impersonation across agent interactions. Additionally, the use of PrivateFactsURL supports privacy-preserving resolution pathways, helping obfuscate client access patterns in alignment with zero-trust security principles.

B. Authentication

Agent metadata is authenticated via decentralized identifiers (DIDs), and all claims within AgentFacts such as capabilities, compliance assertions, or audit results must be signed by credential authorities anchored to verifiable trust domains. Metadata updates do not require modifications to the Lean Index Layer; instead, they are independently hosted and signed

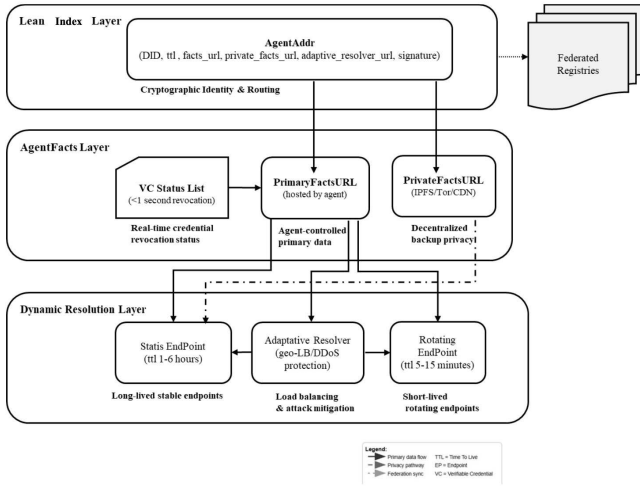


Fig. 3. NANDA Index and AgentFacts Architecture: A modular three-layer system for decentralized AI agent discovery and routing. The **Lean Index Layer** resolves agent identifiers into signed `AgentAddr` records containing cryptographic identity, metadata URLs, and routing information, federated across registries. The **AgentFacts Layer** distributes dynamic, agent-controlled metadata via primary and private URLs, with real-time verifiable credential (VC) status updates for revocation. The **Dynamic Resolution Layer** enables endpoint resolution through stable, adaptive, and rotating strategies to support privacy, load balancing, and DDoS resilience. This layered design enables scalable, privacy-respecting, and interoperable agent discovery across federated domains [17].

by agents or authorized third-party infrastructure. This supports decentralized publication with verifiable provenance.

The Lean Index Layer does not mediate live authentication. Instead, it serves as a cryptographic root of trust, providing immutable references for downstream verification. Agent publishers may authenticate using DID-based credentials, issuer attestations, or delegated authority models supporting both self-sovereign and enterprise-aligned agent lifecycles.

C. Scalability

NANDA is architected for internet-scale performance through its layered and modular design. The Lean Index Layer minimizes write overhead by storing only signed pointers (`AgentAddr`), while metadata and operational state are managed externally in the AgentFacts and Dynamic Resolution layers. This separation eliminates write amplification and enables horizontal scaling.

TTL-based caching ensures that resolution requests are handled efficiently by edge resolvers or clients, reducing pressure on the Lean Index Layer. Meanwhile, the use of `AdaptiveResolverURL` and rotating endpoint pools enables responsive, real-time routing without burdening the index infrastructure.

The system supports federated deployment, where Lean Index instances can be domain-specific (e.g., healthcare, finance) or geo-localized. Cross-instance interoperability is achieved through DID-based resolution and verifiable claims, allowing seamless operation across federated trust boundaries. For neutrality, the Index will also be hosted at 15 universities to enable resilience and distributed governance.

D. Maintainability

The logic of the Lean Index Layer is deliberately minimal and stable, reducing operational complexity and surface area for error. Since dynamic state and capabilities are managed through external AgentFacts, updates to the index are infrequent and lightweight.

All records conform to versioned, JSON-LD-based schemas with forward-compatible contexts, ensuring future extensibility. Metadata evolution does not require changes to the Lean Index Layer, enabling rapid iteration at the agent level. Supporting tooling for validation, routing policy, and credential inspection is modular and externally referenceable, ensuring maintainability across long-term, multi-party ecosystems

VIII. COMPARATIVE EVALUATION

Our comparative analysis is two-fold:

- Table I compares registry solutions from MCP, A2A (Google), AGNTCY, Entra Agent ID and NANDA Index, analyzing their purpose, discovery paths, trust primitives, privacy mechanisms, endpoint freshness strategies, schema complexity, and best-fit use cases.
- Table II provides a detailed feature-level comparison between Agent Cards (used in A2A) and Agent Facts (used in NANDA Index), highlighting key differences—including but not limited to metadata structure, endpoint modeling, cryptographic guarantees, and extensibility.

IX. EVOLUTION OF AGENT REGISTRY ARCHITECTURES

Agent registry systems have evolved from simple, file-based descriptions to distributed, cryptographically-verifiable registries with structured discovery protocols. This section outlines the progression across three key phases, each adding layers of interoperability, scalability, trust, and governance.

A. Static, Isolated Discovery

The earliest registry mechanisms rely on static files (e.g., JSON or YAML manifests) published at well-known locations on an agent’s domain. These files are primarily consumed manually or by tightly coupled runtimes and contain minimal, static metadata. Common attributes include agent name, endpoint, and basic capabilities.

Example: Google A2A `/.well-known/agent.json`

B. Dynamic RESTful APIs

This phase introduced runtime introspection via HTTP APIs and formally validated JSON schemas. MCP has RESTful API to find and list available MCP server in the client apps .

C. Verifiable Metadata and Federated Trust and AI agent quilt

Registries in this phase adopt cryptographic verification and federated trust mechanisms closer to Nanda Index. Agent metadata is signed using W3C Verifiable Credentials (VCs), PKI certificates, or JSON Canonicalization with hashing and signing. ID-based identities or domain-bound signatures ensure authenticity, while TTL and revocation mechanisms enable fine-grained cache control. These designs enable trust

TABLE I
COMPARISON OF FIVE AGENT REGISTRY APPROACHES

Dimension	MCP	A2A	AGNTCY	Entra Agent ID	NANDA Index
Purpose	Centralized publish + discover for MCP servers	Self-hosted capability + endpoint descriptor	Distributed + multi-registry interoperability	Managed enterprise agent directory	Verifiable, privacy-preserving capability facts
Discovery Path	REST list + GET by id	Well-known JSON (1 hop)	Semantic discovery based on taxonomies with local and global metasearch	Portal + Graph/Policy APIs	Lean index → Facts / PrivateFacts (2 hop)
Trust Primitive	GitHub OAuth + DNS TXT	HTTPS + optional token	Sigstore for data provenance attestations, trustless EVM optional.	Azure AD token + policy engine	VC v2 signatures + VC-Status
Privacy Option	None (public reads)	None	Notion of private directories and public vs public records.	Directory scope policies	PrivateFactsURL (obfuscated path)
Endpoint Freshness	Poll + updated timestamps	Assumed stable (no TTL)	Adaptive DHT cache; digest rev	Platform-managed sync	TTL + rotating / adaptive endpoints
Schema Weight	1–3 KB JSON	0.3–1 KB JSON	4MB + signature	Directory object meta-data	1–3 KB JSON-LD + VC
Best Fit	Tool/plugin ecosystems	SaaS-style API agents	Federated / hybrid fleets, multi-registry	Regulated enterprise governance	High-churn, privacy / verifiability critical

TABLE II
AGENT ADVERTISEMENT MODELS: CARD VS. FACTS

Feature	A2A Agent Card	NANDA AgentFacts
Identifier	Host URL	Stable ID + signed AgentAddr ref
Endpoints	Single fixed URL	Static + rotating + adaptive (TTL) set
Capability Model	skills + capabilities.*	skills + capabilities (VC claims)
Authentication	securitySchemes list	capabilities.authentication + VC issuer attestations
Integrity Wrapper	Plain JSON over HTTPS	JSON-LD + VC signature + status list
Privacy Option	None	PrivateFactsURL (dual-path)
Freshness	HTTP cache only	TTL per endpoint + revocation events
Revocation	Re-fetch interval	VC-Status (1s)
Size (typical)	0.3–1 KB	1–3 KB
Fetch Hops	1 (well-known)	2 (Index → Facts)
Implementation Effort	Low	Medium (VC tooling)

portability, auditability, and agent-to-agent verification. They are well-suited for mobile, privacy-sensitive, or safety-critical deployments. This approach is closer to Nanda Index.

X. DISCUSSION

The proliferation of autonomous AI agents across enterprise, research, and consumer domains has created an urgent infrastructure challenge: how to discover, identify, and trust agents at Internet scale. This survey examined five representative registry architectures: MCP Metaregistry, A2A, Microsoft Entra Agent ID, NANDA Index, and AGNTCY ADS, each addressing core requirements of security, authentication, scalability, and maintenance through distinct architectural approaches.

Our analysis reveals several key insights that will shape the future of agent discovery infrastructure:

- 1) **Architectural Trade-offs Are Protocol-Specific.** The “right” registry architecture depends heavily on deployment context. Enterprise environments with existing Azure

AD infrastructure benefit from Entra Agent ID’s seamless integration and zero-maintenance approach. Open research communities and decentralized applications require the cryptographic guarantees and federated governance of NANDA Index. Protocol-specific ecosystems like MCP benefit from purpose-built registries that leverage existing authentication systems while maintaining simplicity.

- 2) **Decentralization Enables Long-term Sustainability.** While centralized approaches offer operational simplicity, they create single points of failure and vendor lock-in risks that become increasingly problematic as agent ecosystems mature. NANDA Index’s federated design and AGNTCY ADS’s content-addressed, OCI-aligned model with decentralized rendezvous demonstrate how decentralized architectures can achieve both scalability and community governance. The dual-path resolution pattern in NANDA and ADS’s separation of semantic mapping from immutable content address both privacy and integrity concerns.

- 3) **Security Must Be Built-in, Not Bolted-on.** All examined registries recognize that cryptographic integrity is foundational whether through W3C Verifiable Credentials (NANDA), DNS-TXT verification (MCP), or Azure AD's enterprise security controls (Entra). However, AGNTCY ADS stands out with its Sigstore-backed keyless signing and optional DID-based identity, ensuring both data authenticity and server authentication. This approach prevents registry poisoning and enables private discovery patterns.
- 4) **Interoperability Remains the Critical Gap.** Despite architectural differences, these registries serve overlapping use cases and will inevitably need to interoperate as agent ecosystems mature. Cross-protocol discovery, unified namespace management, and portable agent identities represent the next frontier for infrastructure development.
- 5) **Community Governance is Essential for Ecosystem Health.** History shows that the most resilient Internet infrastructure such as DNS, HTTP, and email, emerges from open, multi-stakeholder governance. While proprietary platforms like Entra Agent ID serve specific enterprise needs, the broader agent ecosystem requires community-governed registries that can evolve independently of any single vendor's interests.

Implications for Trust-Critical Domains. Healthcare exemplifies why trust primitives matter: a patient care coordination agent must verify diagnostic agents' credentials (authentication), ensure treatment recommendations haven't been altered (integrity), and protect patient privacy during cross-hospital queries (confidentiality). NANDA Index's W3C VC signatures and PrivateFactsURL support HIPAA-compliant audit trails [10] and privacy-preserving lookups. AGNTCY ADS's Sigstore provenance enables "only execute if verified" policies required by FDA software-as-medical-device regulations. Entra Agent ID's Conditional Access integrates with existing healthcare IAM for zero-trust clinical workflows [1]. As AI agents expand into regulated sectors, registries become the root of trust for safe, accountable autonomous systems.

XI. THE PATH AHEAD: A SWITCHBOARD FOR THE AGENTIC WEB

Registry architectures must evolve toward federated models that separate stable identity resolution from dynamic capability metadata, enabling cryptographic trust and cross-organizational discovery without sacrificing privacy or operational autonomy: whether through protocol-specific solutions like MCP's centralized metaregistry and A2A's well-known endpoints, enterprise governance layers like Entra Agent ID, or decentralized approaches combining semantic indexing with content-addressed naming.

To move forward, our teams are deploying a working solution in two phases, inviting researchers and practitioners to join: Phase 1 establishes the NANDA Index at MIT as a neutral, consortium-governed switchboard for cross-organizational agent coordination; Phase 2 adds semantic discovery and federation capabilities through AGNTCY's Agent Directory,

enabling interoperability with heterogeneous registry types via DHT-based routing and OCI-aligned content addressing.

Just as ICANN enabled the internet to scale through neutral governance and open standards, realizing an Internet of AI Agents requires foundational infrastructure built collaboratively across industry, academia, and civil society, where technical standards, governance frameworks, and reference implementations reflect diverse needs rather than single-vendor control. The decisions made now will shape agent interaction patterns for decades; we invite the community to participate in building this infrastructure openly, ensuring the agentic web serves the entire ecosystem.

REFERENCES

- [1] B. Li, P. Qi, B. Liu, S. Di, J. Liu, J. Pei, J. Yi, and B. Zhou, "Trustworthy ai: From principles to practices," *ACM Computing Surveys*, vol. 55, no. 9, pp. 1–46, 2023, arXiv:2110.01167.
- [2] Model Context Protocol Contributors, "Model Context Protocol Registry," <https://github.com/modelcontextprotocol/registry>, 2025.
- [3] Google Developer Blog, "Announcing the agent2agent protocol (A2A)," <https://developers.googleblog.com/en/a2a-a-new-era-of-agent-interoperability/>, 2025, accessed: 2025-07-22.
- [4] A. Simons, "Announcing microsoft entra agent id: Secure and manage your ai agents," <https://techcommunity.microsoft.com/blog/microsoft-entra-blog/announcing-microsoft-entra-agent-id-secure-and-manage-your-ai-agents/3827392>, May 2025, accessed: 2025-05-29.
- [5] R. Raskar, P. Chari, J. J. Grogan, M. Lambe, R. Lincourt, R. Bala, A. Singh, A. Chopra, R. Ranjan, S. Gupta *et al.*, "Upgrade or switch: Do we need a new registry architecture for the internet of ai agents?" *arXiv preprint arXiv:2506.12003*, 2025.
- [6] A. Ehtesham, A. Singh, G. K. Gupta, and S. Kumar, "A survey of agent interoperability protocols: Model context protocol (mcp), agent communication protocol (acp), agent-to-agent protocol (a2a), and agent network protocol (anp)," <https://arxiv.org/abs/2505.02279>, 2025.
- [7] K. Ramezanpour and J. Jagannath, "Intelligent zero trust architecture for 5g/6g networks: Principles, challenges, and the role of machine learning in the context of o-ran," *Computer Networks*, vol. 217, p. 109358, 2022.
- [8] H. Sedjelmaci and N. Ansari, "Zero trust architecture empowered attack detection framework to secure 6g edge computing," *IEEE Network*, vol. 38, no. 1, pp. 196–202, 2024.
- [9] L. Muscariello, V. Pandey, and R. Polic, "The agntcy agent directory service: Architecture and implementation," *arXiv*, September 2025, available at: <https://arxiv.org/abs/2509.18787>.
- [10] M. Ashrafuzzaman, "Blockchain-enabled audit trails for public mis: Enhancing transparency in government it systems," *Available at SSRN 5286689*, 2025.
- [11] Open Container Initiative, "Oci distribution specification," <https://github.com/opencontainers/distribution-spec>, 2025.
- [12] IPFS Project, "Ipfs content routing and kadmlia dht," <https://docs.ipfs.tech/concepts/how-ipfs-works/>, 2025.
- [13] L. Muscariello and R. Polic, "Agntcy agent directory service (ads) internet-draft," <https://spec.dir.agntcy.org/draft-agntcy-ads>, 2025, work in progress; 2025-08-12.
- [14] Ethereum Improvement Proposal 8004 Authors, "Eip-8004: Trustless agents (erc-8004)," <https://eips.ethereum.org/EIPS/eip-8004>, 2025, draft proposal; Accessed: 2025-09-08.
- [15] S. Wang, R. Raskar, M. Lambe, P. Chari, R. Singhal, S. Gupta, R. Ranjan, and K. Huang, "Using the nanda index architecture in practice: An enterprise perspective," *arXiv preprint arXiv:2508.03101*, 2025.
- [16] J. Zinky, H. Seshadri, M. Lambe, P. Chari, and R. Raskar, "Nanda adaptive resolver: Architecture for dynamic resolution of ai agent names," *arXiv preprint arXiv:2508.03113*, 2025.
- [17] R. Raskar, P. Chari, J. Zinky, M. Lambe, J. J. Grogan, S. Wang, R. Ranjan, R. Singhal, S. Gupta, R. Lincourt, R. Bala, A. Joshi, A. Singh, A. Chopra, D. Stripelis, B. B. S. Kumar, and M. Gorsikh, "Beyond dns: Unlocking the internet of ai agents via the nanda index and verified agentfacts," 2025. [Online]. Available: <https://arxiv.org/abs/2507.14263>